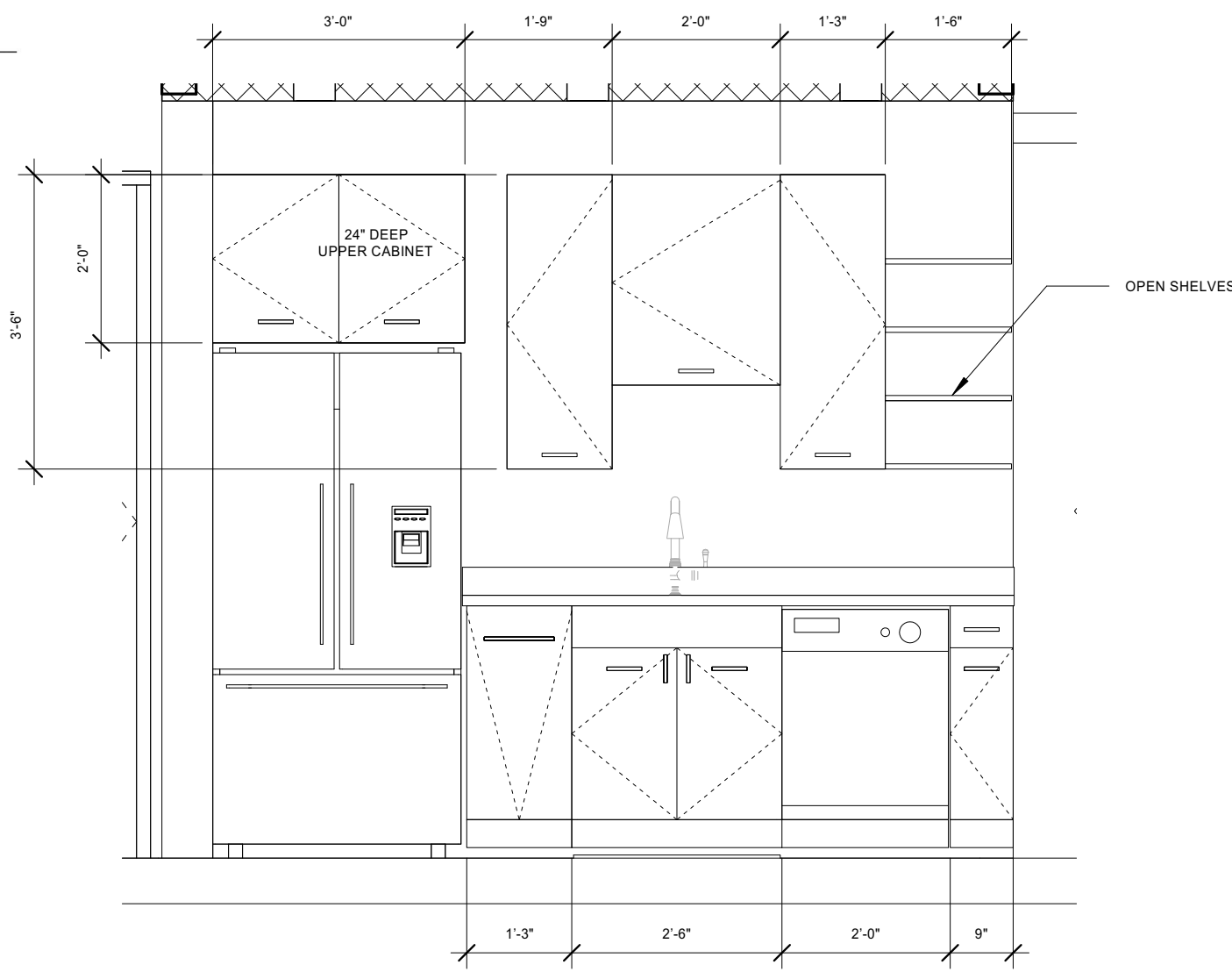




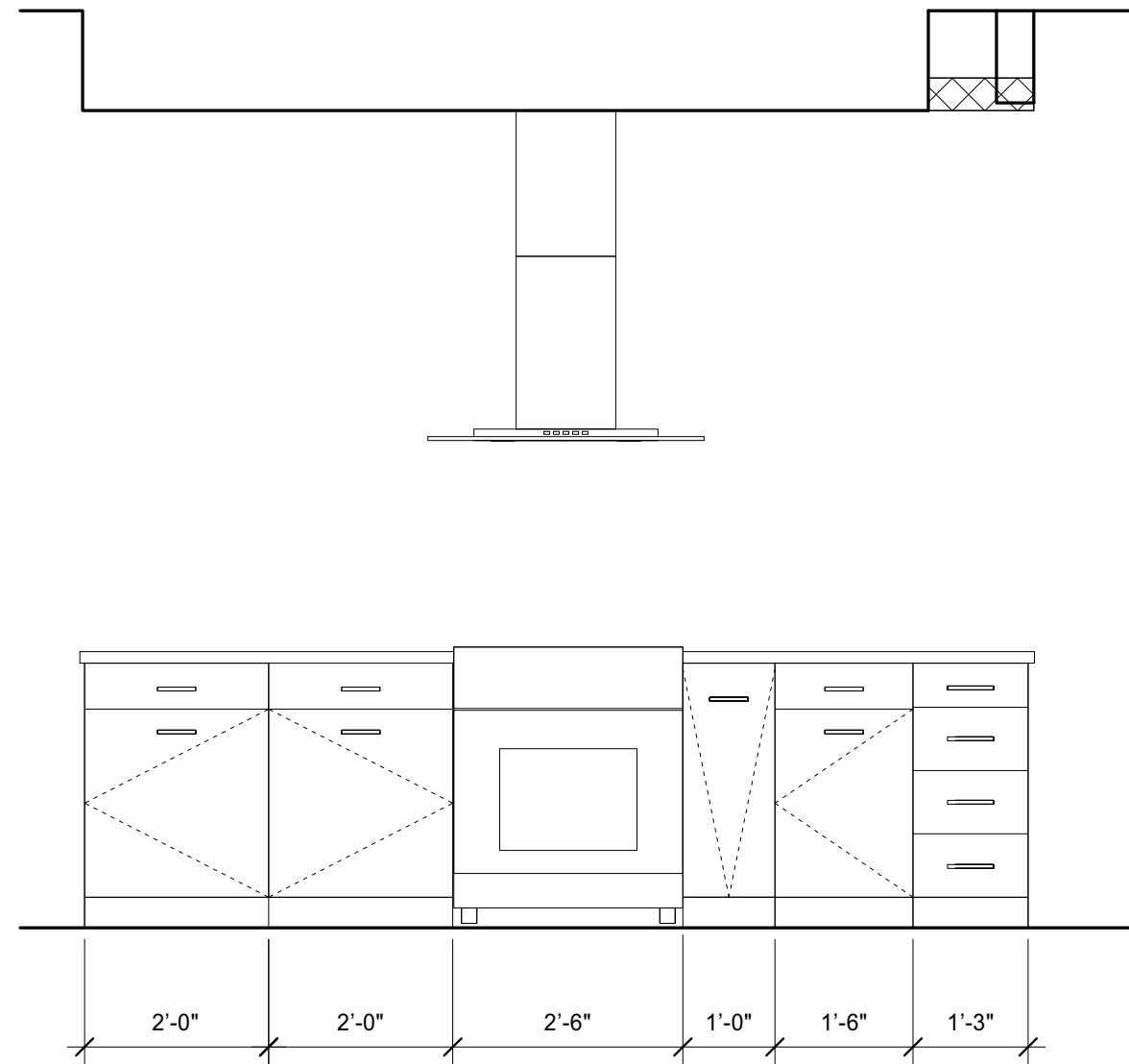
Reviewed for Code Compliance
Inspection Division
Approved with Conditions

Date: 05/16/14



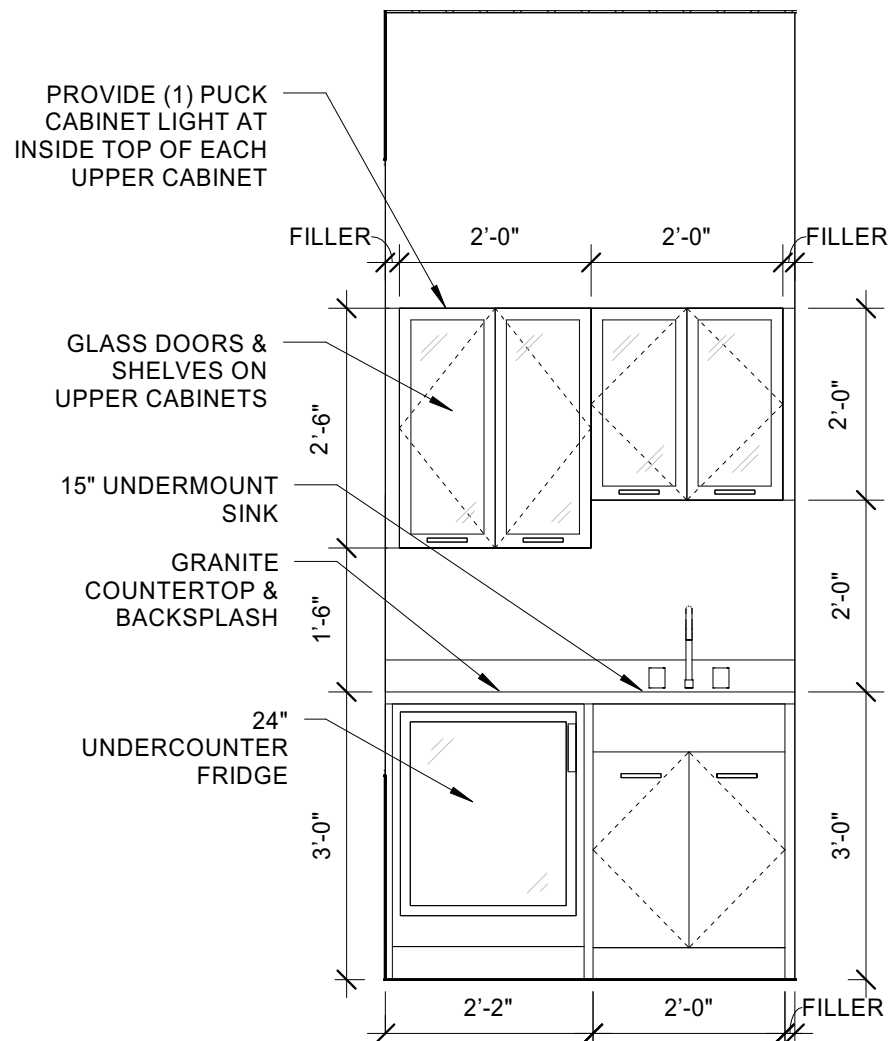
A | UNIT 204 KITCHEN ELEV. A

1/2" = 1'-0" 0 1'-0" 2'-0" 4'-0" 6'-0"



B | UNIT 204 KITCHEN ELEV. B

1/2" = 1'-0" 0 1'-0" 2'-0" 4'-0" 6'-0"



NOTE: AT INSTALLATIONS WHERE CABINET ENDS ARE EXPOSED, PROVIDE FINISHED END PANELS AS REQUIRED & 1/2" OVERHANG ON COUNTERTOP

C | TYP. WET BAR ELEVATION - ADD/ALT.

1/2" = 1'-0" 0 2'-0" 4'-0" 6'-0" 8'-0" 10'-0"

